

ADOPT THE ART

SUPPORT COLLECTIONS CARE AT FRANCES M. MAGUIRE HALL



SUMMER 2025

ADOPT THE ART

When you "adopt" a work of art that's planned for the initial installation at Maguire Hall, you help underwrite conservation, framing, installation, and collection care. Your name will be added to the credit line.

For example:

Apollo, date unknown, by Eva Martino. Wood, 18 x 25 x 16 in., Museum purchase, 2021, Adopted by Jane and John Doe.

THREE LEVELS TO CHOOSE FROM

\$5,000 – works of art greater than 50" in any dimension

\$2,500 – works of art greater than 25" in any dimension

\$1,000 – works of art smaller than 24" in any dimension

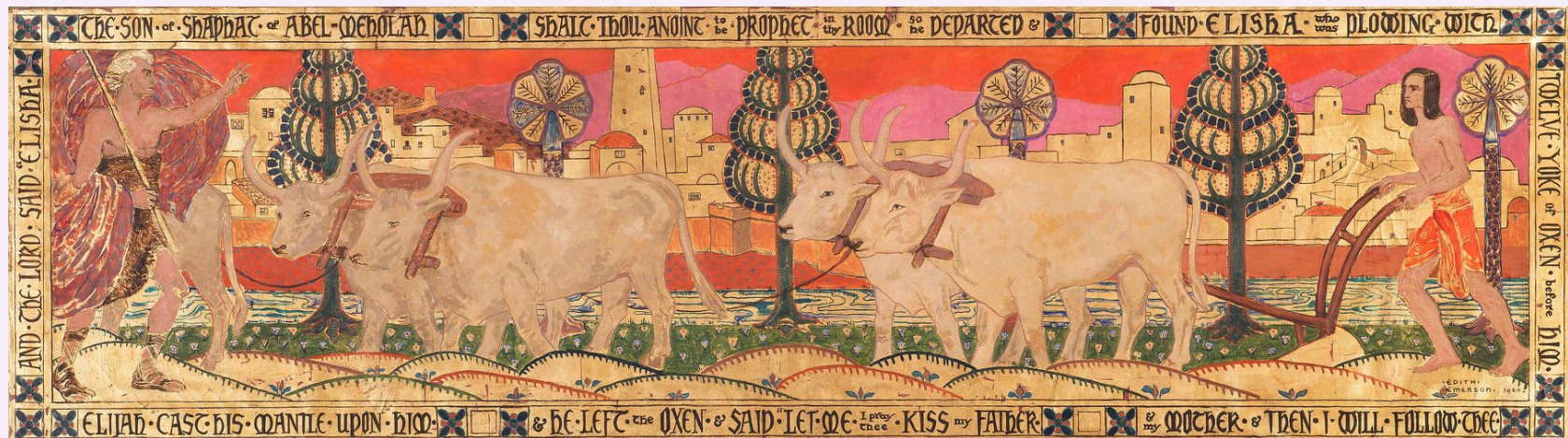
Can't decide today?

Contact Erin Lawrence in Development at 215-247-0127 or elawrence@woodmereartmuseum.org.



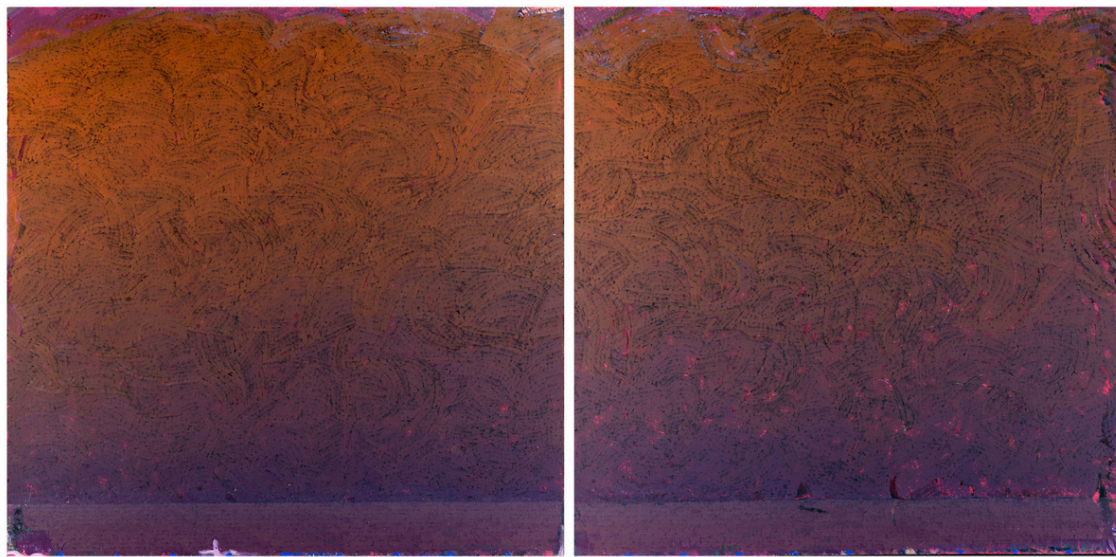
Studies for the triptych mural **Heroism (Young David), Sacrifice (Christ among the Doctors), Service (Young Solomon)**, c. 1907, by Violet Oakley for Chestnut Hill Academy.

Oil on canvas, 30 x 90 in. triptych overall



The Calling of Elisha, 1920, by Edith Emerson.

Oil on canvas; 21 3/4 x 78 1/4 in.



Caernarvon II, 1987–88, by Warren Rohrer.
Oil on linen, 60 1/4 x 60 1/4 in. each; 60 1/4 x 120 3/8 in. overall



Madre del Nenê, 1990, by Bo Bartlett.
Oil on linen, 70 x 94 in.



Boy in Night Grass, 2016, by Jonathan Lyndon Chase.
Mixed media on canvas, 48 x 60 in.



Hypothetical Marriage of Monsieur Marcel Duchamp and Miss Helen Keller, 1982, by Frank Bramblett.
Floor tile, silicon rubber, mirror, glass, enamel, colored chalk & felt on panel; 80 x 96 3/4 in.



Boyd Theater Etched Mirror Set
Set of 2.

Sandblasted, etched, gilded, and colored glass, created in 1928 by ENY Art, Inc. of New York City, 115 1/4 x 25 1/4 in each.



Boyd Theater Mirror Top Panel

Carved, sandblasted, gilded, and colored glass, created in 1928 by ENY Art, Inc. of New York City, 72 1/8 x 101 in.



Boyd Theater Mirror Set Side panels

Set of 4.

Carved, sandblasted, gilded, and colored glass, created in 1928 by ENY Art, Inc. of New York City.



Portrait of St. Croix Woman, 1935, by Moy Glidden.

Oil on canvas, 30 1/8 x 25 in.



Portrait of a St. Croix Woman, 1935, by Jane Piper.

Oil on canvas, 24 1/4 x 20 in.



Untitled (Playing Chess), date unknown, by Morris Blackburn.

Oil on canvas, 24 1/8 x 30 1/8 in.



Still Life with Copper Kettle, 1904, by Arthur B. Carles.

Oil on canvas; 20 3/4 x 28 7/8 in.



Tabletop Still Life of Mixed Fruits,
c. 1940, by Abraham Rattner.
Oil on canvas, 23 3/4 x 29 in.



Boyd Theater Saturn Lights
3 Sets of 2.
Rambusch 1939 "Aura" light fixtures, 22 in. each



St. Rita in Ecstasy, 2000, by
Anthony Visco.
Plaster, 31 x 22 1/2 in.



Boyd Theater Wall Lights
Set of 2.
10 x 20 in. each



Apollo, date unknown, by Eva Martino.
Wood, 18 x 25 x 16 in.



Figure, 1955,
by Nora Speyer.
Oil on canvas, 49 x 30 in.



Corner, 1985, by Dona Nelson.
Oil on canvas, 48 x 32 in.



Portrait of Edith Emerson Lecturing,
c. 1935, by Violet Oakley.

Oil on canvas, 35 x 45 in.



Cafe au Lait, 2010,
by Murray Dessner.

Acrylic on canvas, 22 x 25 in.



Trees and Rocks, 1954,
by Sideo Fromboluti.

Oil on canvas, 32 x 39 in.



Boyd Theater Ceiling Light
Set of 2.

Art Deco pyramid light fixtures,
24 x 24 in. each



***Still Life with Brass Coffee Pot, Bowl,
Celery and Red Peppers***, date unknown,
by William Merritt Chase.

Oil on canvas, 32 1/8 x 28 in.



Ring, c. 1970, by Stanley Lechtzin.
Gold, aquamarine, 1 5/8 x 7/8 x 9/16 in.



Pheasant with Green Apple, c. 1924, by Arthur B. Carles.
Oil on canvas, 22 x 18 3/8 in.



In Between Small Trees 2,
date unknown, by Ying Li.
Oil on canvas, 14 x 11 x 1 3/4 in.



Two Figures, date unknown, by
Raphael Sabatini.
Oil on linen, 22 x 18 in.



Smokey Topaz Brooch, 19th Century,
by Bailey, Banks & Biddle.
Topaz, 10K gold, 2 1/4 x 1 x 3/8 in.



West of Roulette #3, date unknown, by Bill Walton.
Copper, cotton, and gesso, 16 1/2 x 14 1/4 x 1 1/2 in.



Abstract, 1982, by Moe Brooker.
Pastel on board; 16 x 17 3/4 in.



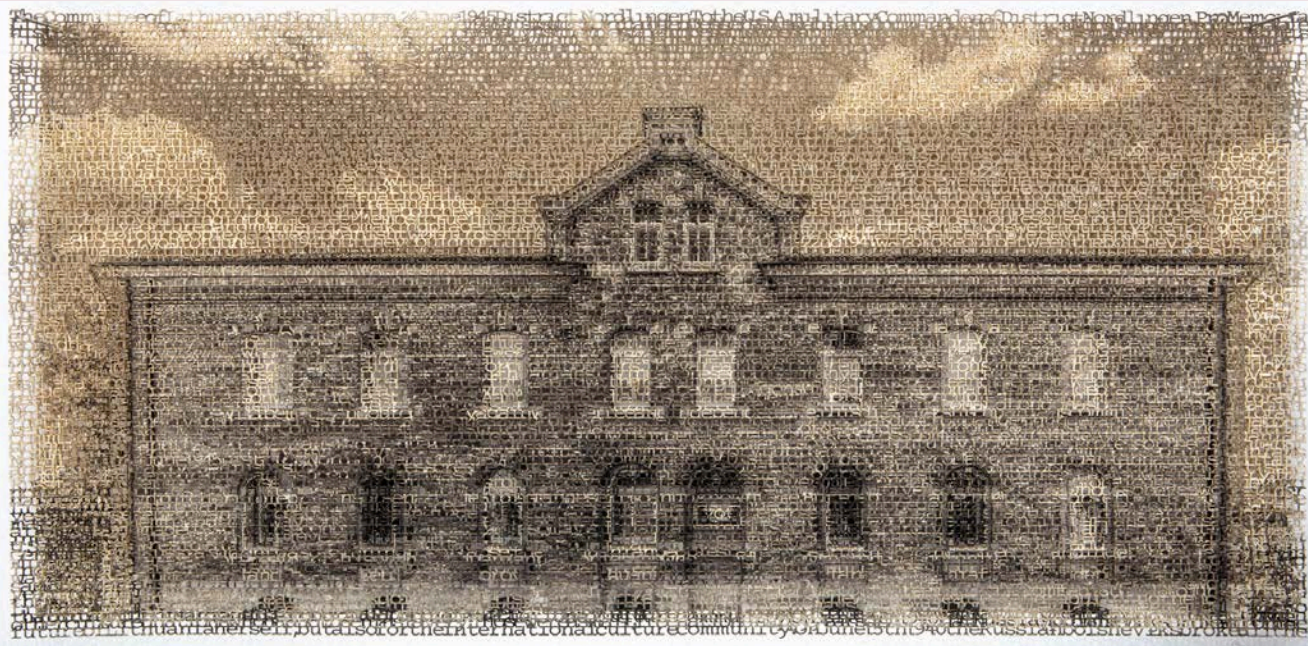
Two Cows in Woods, Date unknown, by Mildred Bunting Miller.
Oil on canvas, 14 1/8 x 17 1/4 in.



Portrait of a Woman (Margaret Breckenridge), date unknown, by Dorcas Cooke Doolittle.
Oil on canvas, 12 x 10 in.



Still Life with Flowers, date unknown, by Biagio Pinto.
Oil on board, 13 1/2 x 17 1/2 in.



Displacement, Ansbach 2, 2018, by Krista Svalbonas.

Archival pigment prints, laser cut and layered, 10 x 21 in.



Harriet Tubman Mug, date unknown, by Roberto Lugo.

Glazed ceramic, 5 x 4 in.



Bracelet, 1993, by Richard Reinhardt.

Sterling silver, 1 7/8 x 2 7/8 x 1/4 in.



Bracelet, 1980, by Richard Reinhardt.

Sterling silver, 2 x 3 x 3/8 in.

Holding On, 2024, by Theophilus Annor.

Gold and faceted gemstone, 1 1/4 x 1 x 1 in.



UPDATE

Adopt the Art

**Help fill the gap
created by the loss
of the \$750K federal grant.**

May 2025

**WOOD
MERE!**

Stained Glass

Stained glass repair
3 windows
total: **\$28,800**



Saint Francis, early 20th Century,
D'Ascenzo Studios.
Leaded glass window, 47 x 22 in. (framed)

Contribute to art restoration

**Help us replace \$250,000 to
restore many works of art.**



Tabletop Still Life with Mix Fruit* by Abraham Rattner **BEFORE** and **AFTER*

Refurbished Boyd Light Fixtures

Help restore 15 light
fixtures: **\$75,000**





Archival Storage

Help us replace
\$33,000 of
storage solutions



Flat File Storage System

15 flat files x \$5,700 each

\$85,500 total

Jewelry Vault Custom Case Work



Ring Case \$30,000

Fan Case \$20,000

Miniature Case \$20,000



**WOOD
MERE!**

THANK YOU!